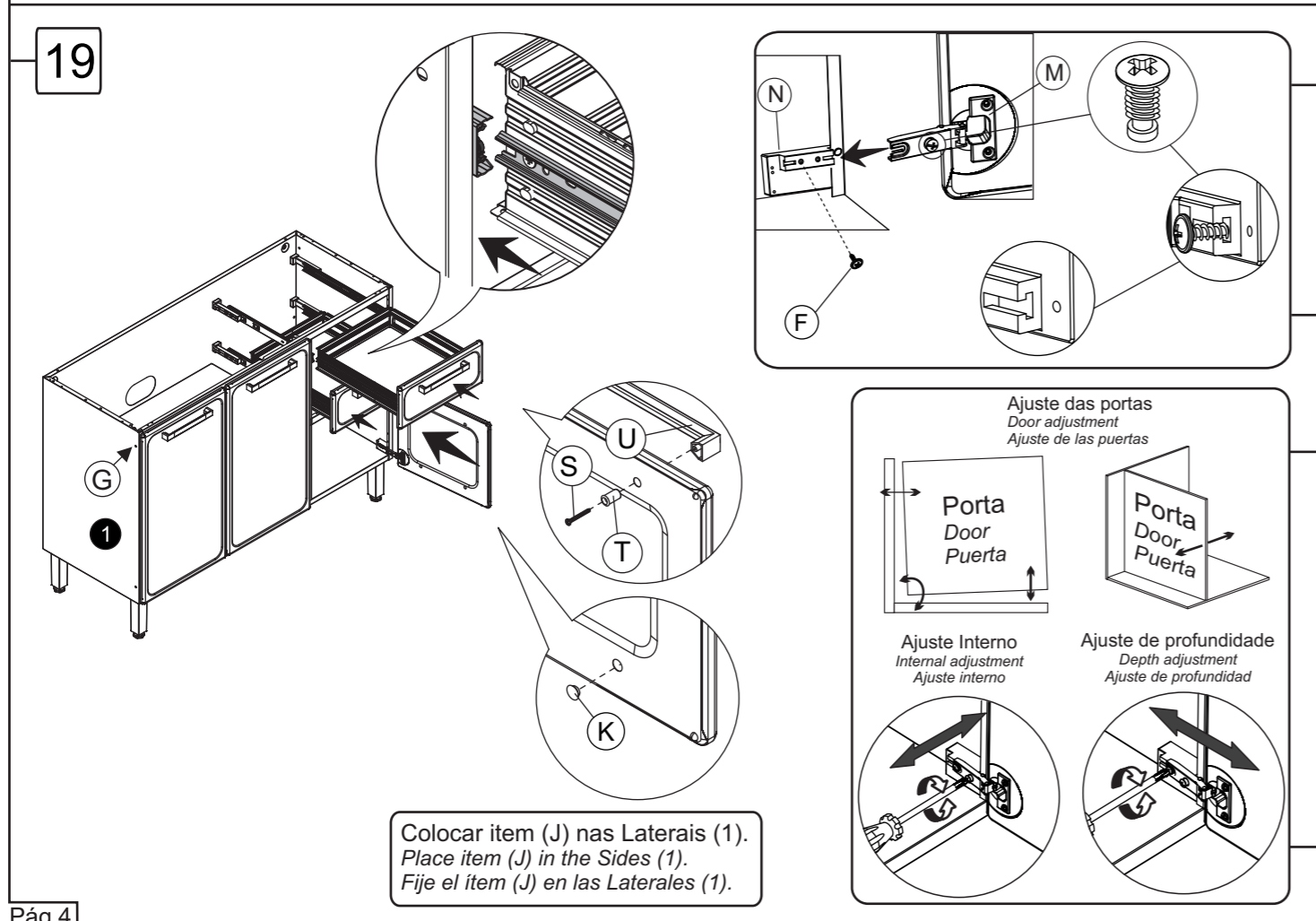


Bertolini Bertolini Bertolini Bert



Bertolini
Balcão 1200 2GV
Base Cabinet 1200 2DW
Mueble Base 1200 2CJ

ATENÇÃO:
-Ler e observar atentamente toda a instrução antes de iniciar a montagem.
-Monte o móvel sobre uma forração, de preferência em cima de uma mesa.
-Somente aperte os Parafusos após a montagem do móvel.
-Observe que nas Laterais existe uma etiqueta de indicação.

ATTENTION:
-Read the instructions carefully before starting the assembly
-Assemble the cabinet on a carpet on top of a table if possible.
-Fasten the screws only after the cabinet complete assembling.
-Observe that there is an indication label on the side units.

ATENCIÓN:
-Lea y fíjese atentamente en la esquemática de la ensamblaje, antes de armar el mueble
-Arme el mueble sobre una superficie protegida, de preferencia arriba de una mesa.
-Solamente apriete los Tornillos después del ensamblaje del mueble.
-Fíjese que en la lateral existe una etiqueta que indica la dirección

	Quantidade Quantity Cantidad
1	02
2	01
3	01
4	01
5	01
6	01
7	01
8	01
9	01
10	01
11	02
12	02
13	02
14	02
15	02
16	01
17	01
18	01
19	04
20	04

Ref:
7024 - 7124 - 7025

Bertolini Bertolini Bertolini Bert

Accessories Hardware Accesorios	Quantity Quantity Cantidad	Accessories Hardware Accesorios	Quantity Quantity Cantidad
A	06	L	08
B	02	M	06
C	03	N	06
D	30	O	01
E	04	P	02
F	50	Q	04
G	22	R	14
H	08	S	10
I	08	T	10
J	04	U	05
K	06	V	02

Parafuso AA 4,8x45
Screw AA 4,8x45
Tornillo AA 4,8x45

Bucha S8
Bushing S8
Taco S8

Parafuso MF 4,0x14
Screw MF 3,5x14
Tornillo MF 3,5x14

Parafuso AA 4,2x9,5
Screw AA 4,2x9,5
Tornillo AA 4,2x9,5

Parafuso MF 3,5x14
Screw MF 3,5x14
Tornillo MF 3,5x14

Parafuso MP 3,5x10
Screw MP 3,5x10
Tornillo MP 3,5x10

Parafuso MP 3,5x10
Screw MP 3,5x10
Tornillo MP 3,5x10

Parafuso 3/16x5/16
Screw 3/16x5/16
Tornillo 3/16x5/16

Porca 3/16
Nut 3/16
Tuerca 3/16

Tapa furo Ø 6,5mm
Hole cap Ø 6,5mm
Tapa agujero Ø 6,5mm

Tapa furo Ø 10mm
Hole cap Ø 10mm
Tapa agujero Ø 10mm

Click Fixação Corrediça
Click Sliding Fixture
Clic Fijación de deslizador

Dobradiça
Hinge
Bisagra

Calço
Wedge
Calce

Calço
Wedge
Calce

Cantoneira
Corner
Corner

Prolongador
Protractor
Prolongador

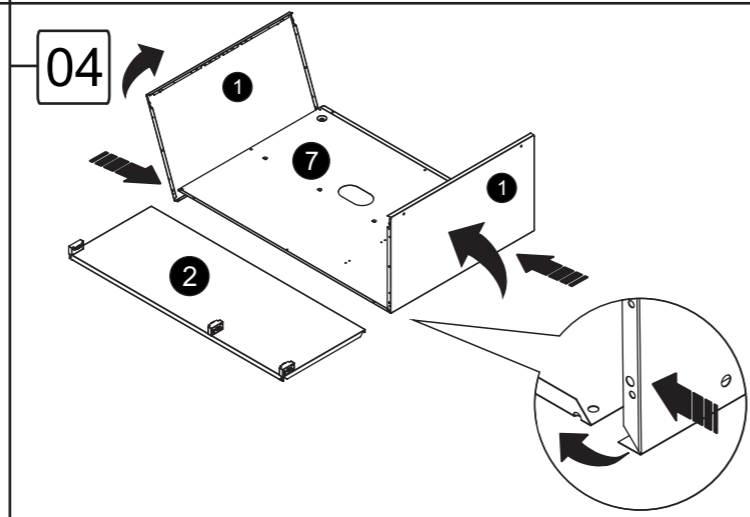
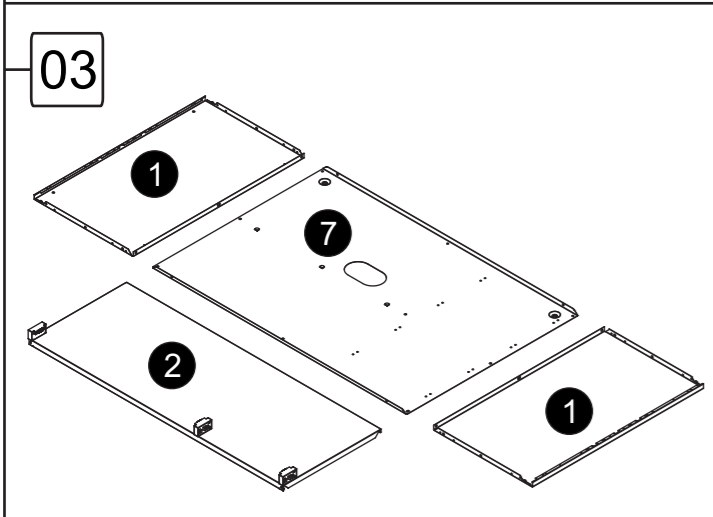
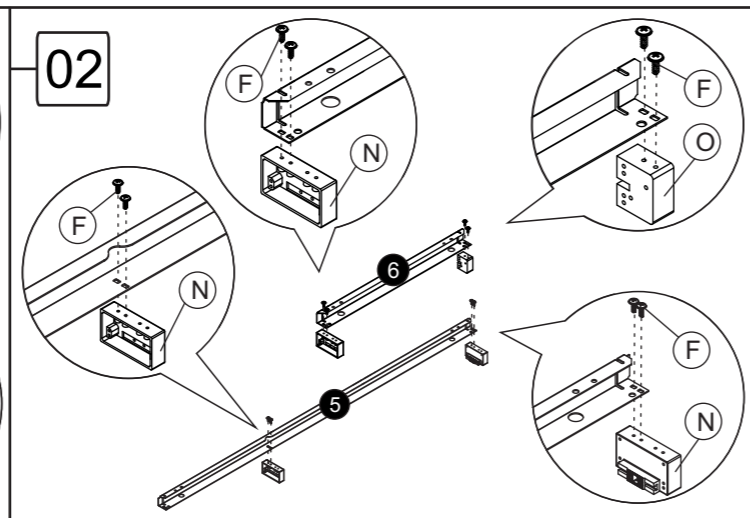
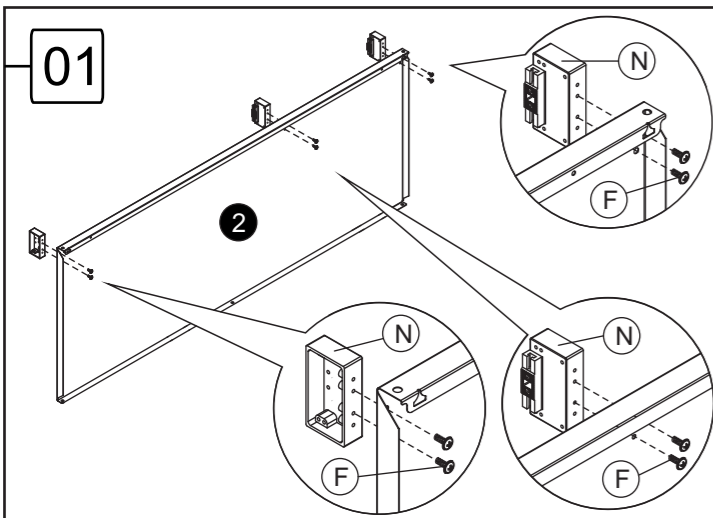
Amortecedor
Shok-absorber
Amortiguador

Parafuso RI 3,5x25
Screw RI 3,5x25
Tornillo RI 3,5x25

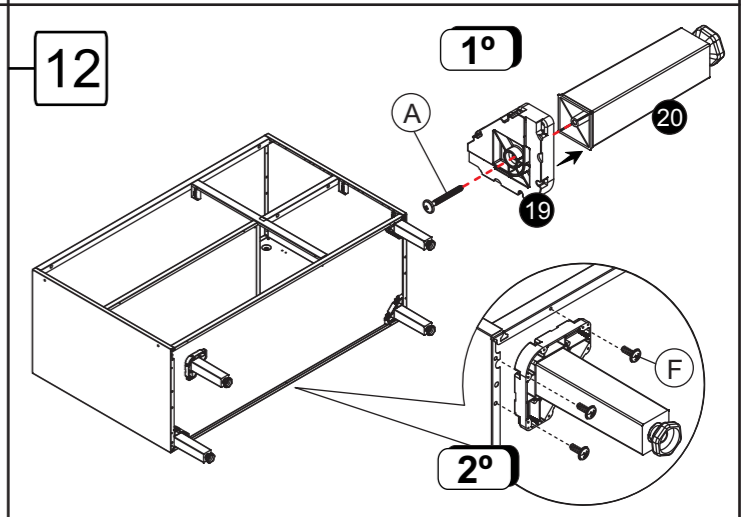
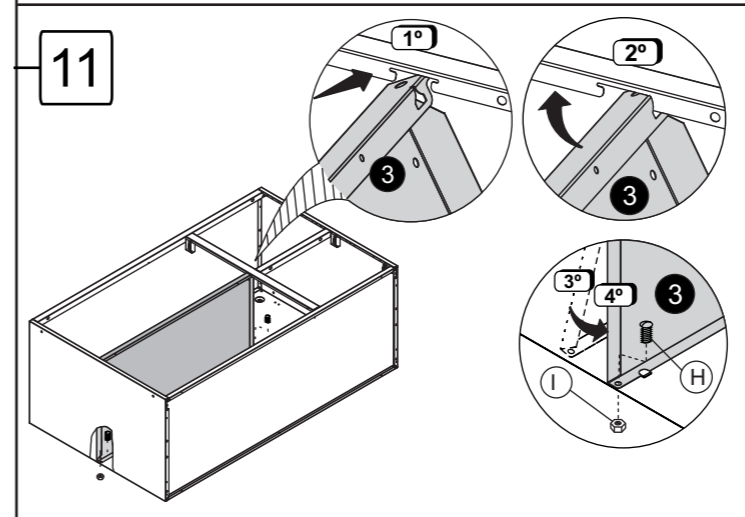
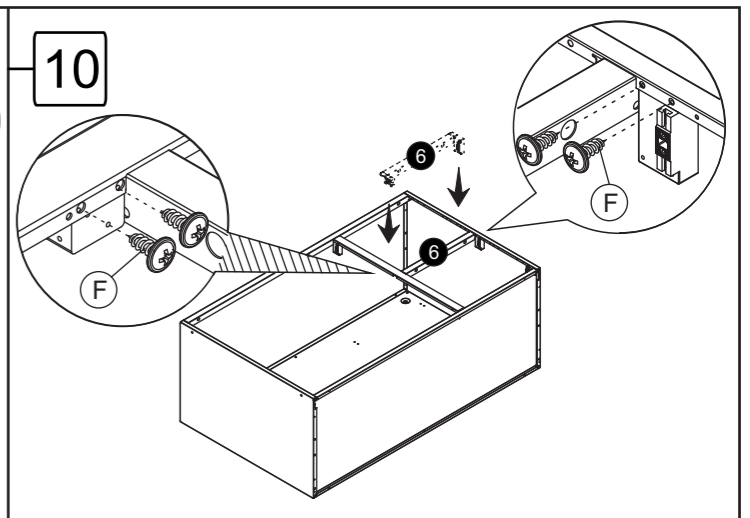
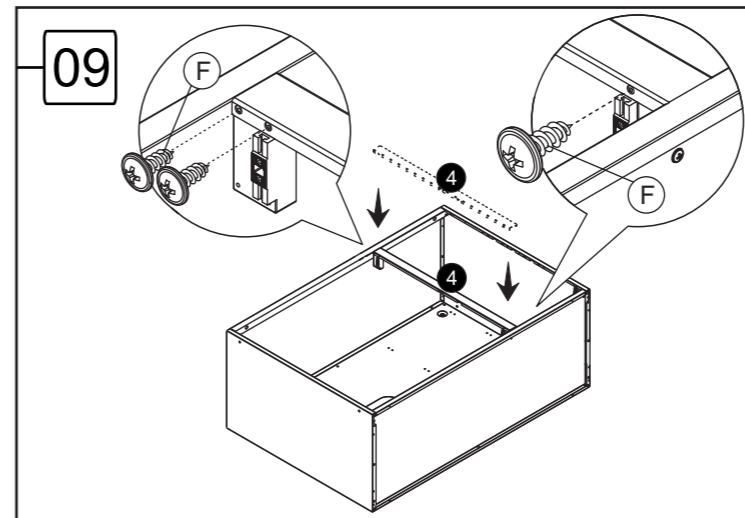
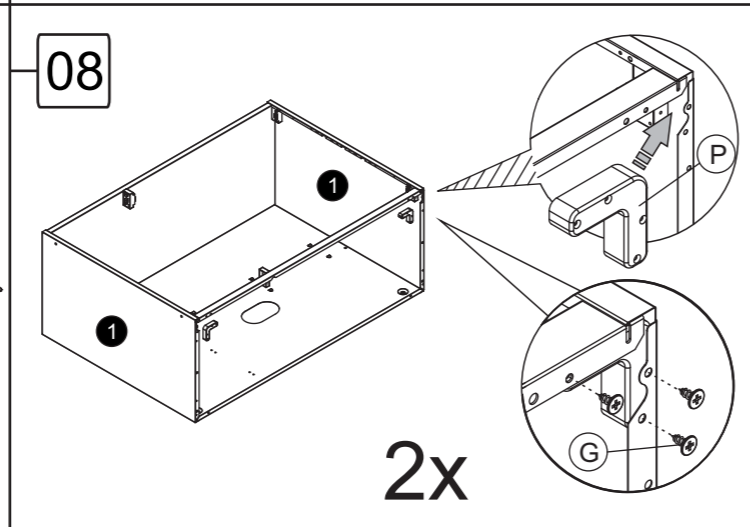
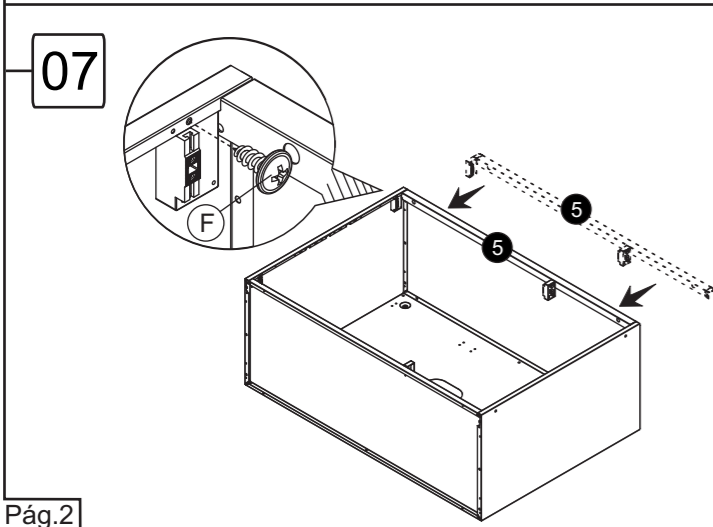
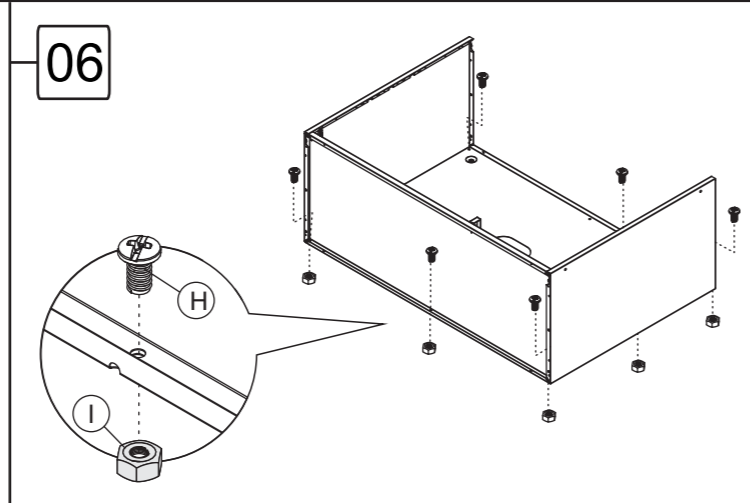
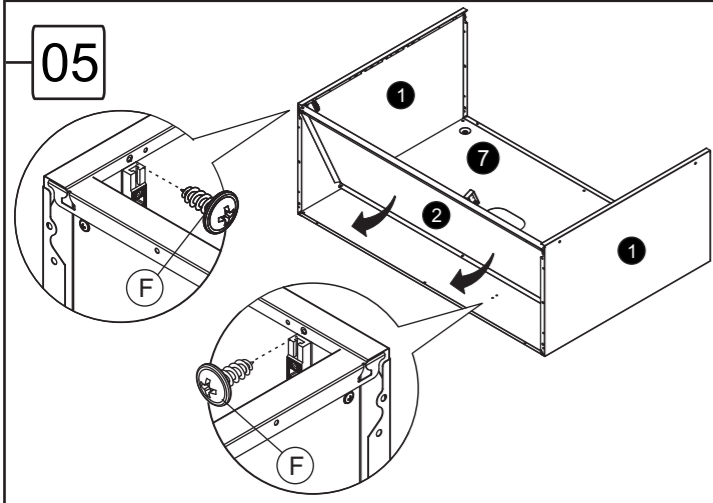
Bucha
Bushing
Taco

Puxador
Handle
Tirador

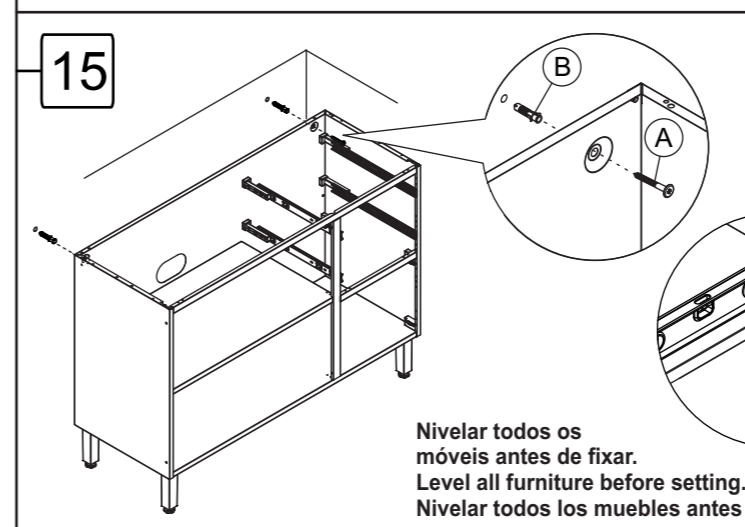
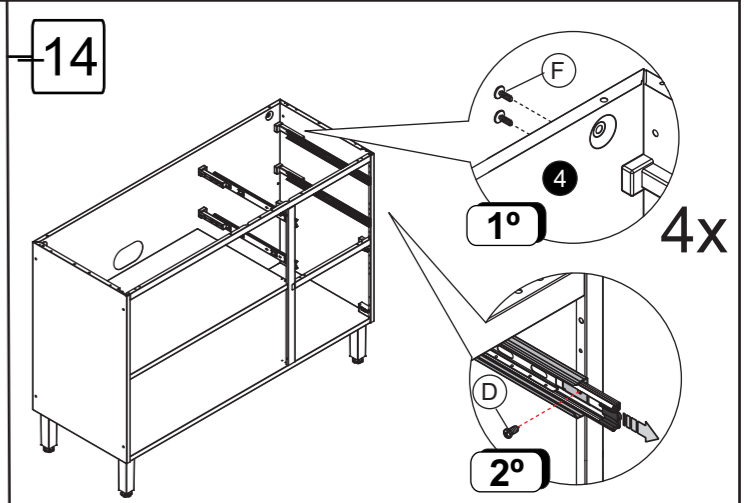
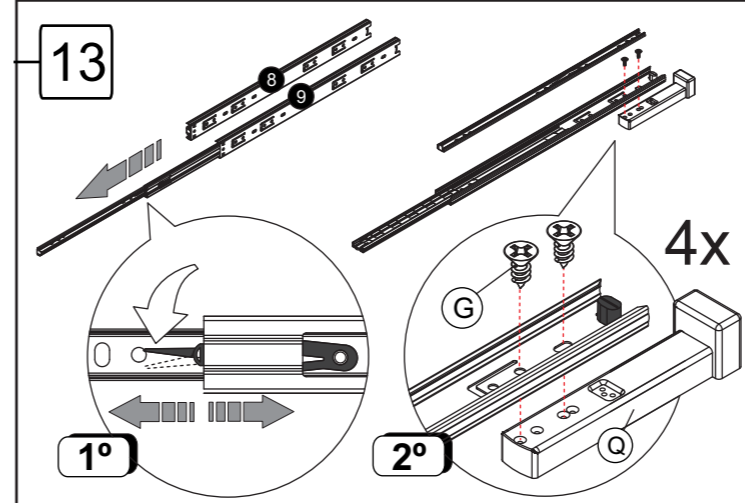
Sarrafo Fixador Pia
Batter Fixing Sink
Sarrafo Fijador Fregadero



Bertolini Bertolini Bertolini Bertolini



Bertolini Bertolini Bertolini Bertolini



Fixação na Parede
Fastening to the wall
Fijación a la pared

IMPORTANTE:
Para sua segurança, fixe o móvel na parede com o acessório fornecido pela Bertolini. **OBS.:** A Bertolini não se responsabilizará por acidentes decorrentes da não observância desta norma e pela fragilidade da parede.

IMPORTANT:
For your safety, fasten the cabinet to the wall with the accessory furnished by Bertolini. **NOTE.:** Bertolini will not be responsible for accidents resulting from non observing this norm or by the weakness of the wall.

IMPORTANTE:
Para su seguridad, fije el mueble en la pared con el accesorio suministrado por Bertolini. **OBS.:** Bertolini no se responsabilizará por accidentes ocasionados por la inobservancia de esta norma y por la fragilidad de la pared.

Nivelar todos os móveis antes de fixar.
Level all furniture before setting.
Nivelar todos los muebles antes de instalar.